

# CALOPAKE® 5970

## BP/EP/USP Precipitated calcium carbonate (pcc)

The CALOPAKE® precipitated calcium carbonate (pcc) grades, manufactured at Specialty Minerals Lifford, are microcrystalline white powders characterized by their high chemical purity, controlled particle shape and particle size distribution.

CALOPAKE® 5970 pcc consists of agglomerated scalenohedral calcitic crystals that exhibit high opacifying power and brightness. The crystal structure of the product results in a high absorption capacity and makes it easy to disperse.

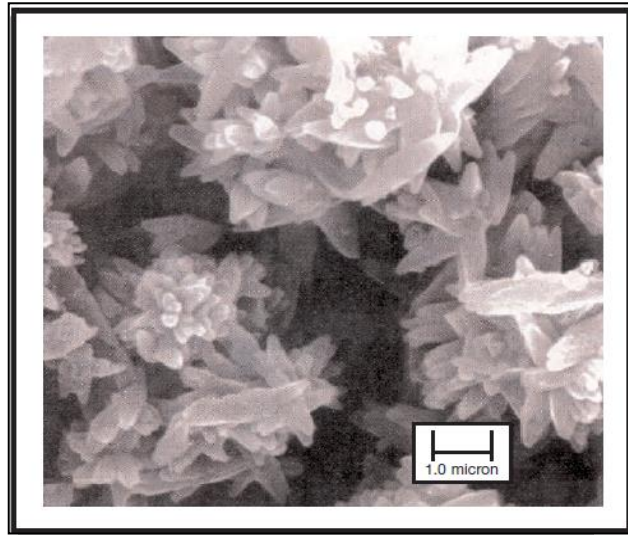
CALOPAKE® 5970 pcc meets the requirements of the current British, European and United States Pharmacopoeia. It also meets the requirements of the Food Chemicals Codex and the Miscellaneous Food Additives regulations E170.

### APPLICATIONS:

CALOPAKE 5970® pcc can be used in a variety of Applications including:

- Fermentation
- Toothpaste
- Nutrient Source
- Surface Coatings

The Specialty Minerals Lifford Site Quality Management System is Certified to ISO 9001:2008.



Test	Units	CALOPAKE® 5970 pcc
Appearance		White powder
Apparent density	g/ml	0.52 to 0.59
+45 µm (British standard)		
Sieve residue	%	0.15 max.
Residual (Sturge)		
Alkalinity	ml of 1M HC1	0.5 max.
pH		10.5 max.
CALOPAKE® 5970 pcc is supplied to the above specification unless otherwise formally agreed.		

Additional Typical data on CALOPAKE® 5970 pcc		
Surface area	m <sup>2</sup> /g	8
Mean particle size	µm	2.0
Flow point	mls H <sub>2</sub> O/15g	15
Colour L value		98

All products are sold on the understanding that the user is solely responsible for determining their suitability for the intended use. All information given and recommendations made herein are based upon our research and are believed to be accurate, but no guarantee, either expressed or implied, is made with respect thereto or with respect to the infringement of any patent. SMI MAKES NO WARRANTY OF MERCHANTABILITY OR SUITABILITY FOR ANY PARTICULAR PURPOSE IN CONNECTION WITH ANY SALE OF THE PRODUCTS DESCRIBED HEREIN. Inconsistent terms and conditions contained in Buyer's purchase order shall not be binding on SMI/BMI unless reflected in writing signed by SMI/BMI's representative. The information contained herein is not to be copied or otherwise used in any publication in whole or in part, without written permission from Specialty Minerals Inc./Barretts Minerals Inc.

### Sales Office

Lifford Lane, Birmingham B30 3JW, United Kingdom  
 Telephone: +44 121 252 4513 Fax: +44 121 252 4556  
 E-mail: spcc.sales.UK@mineraltech.com  
 Web site: www.mineraltech.com

CALOPAKE® is a registered trademark of Minerals Technologies Inc. or its subsidiaries.  
 ©Specialty Minerals Inc. rev 2016