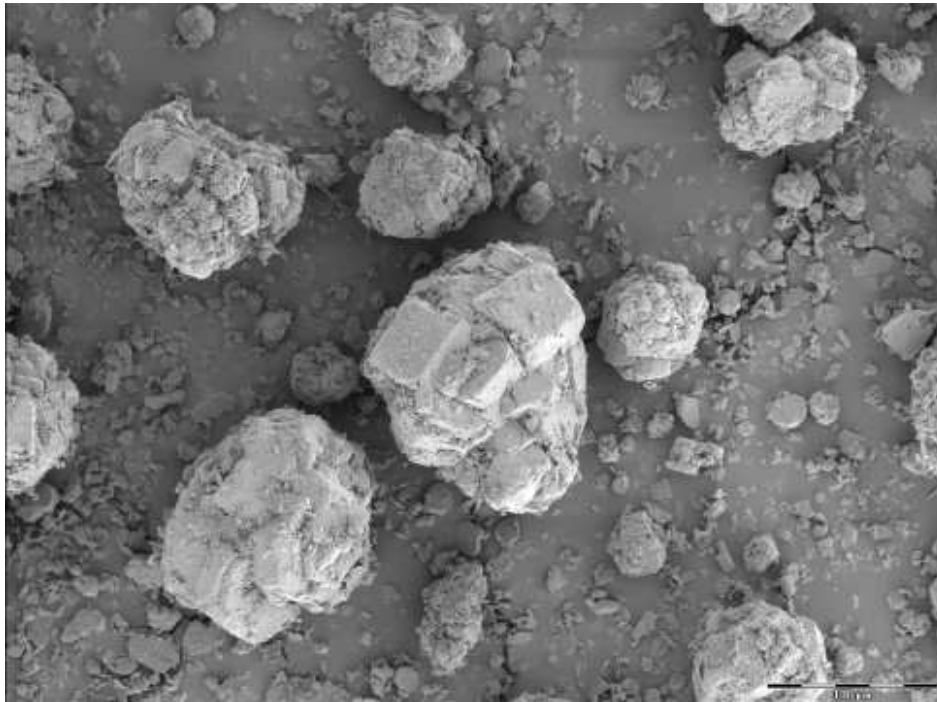


## PRODUCT INFORMATION

Aluminium hydroxide -  $\text{Al}(\text{OH})_3$

NH20



<b>Analysis</b>	<b>Unit</b>	<b>Value</b>	<b>Method</b>
$\text{Al}(\text{OH})_3$	%	approx. 99.7	ICPIOES
$\text{Fe}_2\text{O}_3$	%	approx. 0.01	ICPIOES
$\text{SiO}_2$	%	approx. 0.005	ICPIOES
Loss on ignition (110-1100 °C)	%	approx. 34,6	ISO 806
Crystal Phase		Gibbsite	XRD
pH-Value		approx. 9	DIN EN ISO 787 T9
Bulk Density	$\text{kg/m}^3$	approx. 1100	ISO 903
Moisture	%	< 0,1	DIN EN ISO 787 T2
Spec. Conductivity	$\mu\text{S/cm}$	approx. 30	DIN EN ISO 787 T14

For further information, please contact:

**Division Functional Fillers**

Phone +49(0) 94 31 53- 458/-462/-467

fillers@nabaltec.de

**Nabaltec AG**

P. O. Box 1860 · D-92409

Schwandorf

Phone +49(0) 94 31 53 - 0

Fax +49(0) 94 31 615 57

www.nabaltec.de

*All data listed are reference values and subject to production tolerances.*

*These values are exclusive to the product description and can be changed any time without further notice.*

*No guarantee is placed on the properties.*

*It remains the responsibility of the users to test the suitability of the product for their application.*