

Produkt-/Product-Information
APYRAL 16, APYRAL 24

Mineralische Flammenschutzmittel für
Mineral flame retardants for

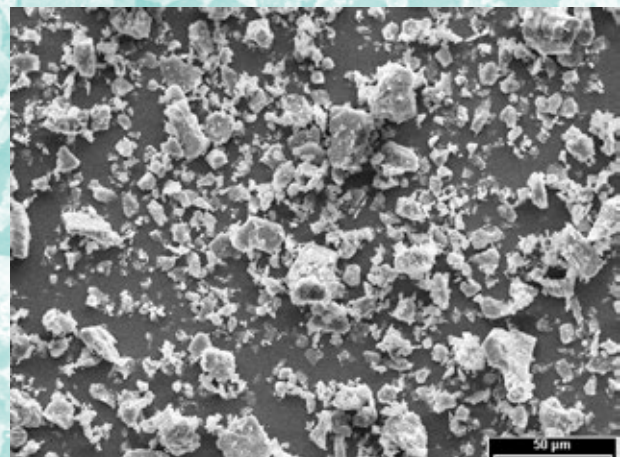
- **Bauindustrie / Construction industry**
- **Fahrzeugbau / Public transport**
- **Elektro-/Elektronikindustrie / Electronic industry**

APYRAL®

Durchschnittsanalyse / Typical analysis		APYRAL 16	APYRAL 24
Al (OH) ₃ - Gehalt / - Content	[%]	99.7	99.7
Feuchte / Moisture	[%]	0.1	0.15
Glühverlust / Loss on ignition	[%]	34.6	34.6
Teilchengröße / Particle size			
(Laserbeugung) / (Laser diffraction)	D ₁₀ [µm]	1.9	1.3
Cilas 1064	D ₅₀ [µm]	16	8
	D ₉₀ [µm]	44	21
Siebrückstand / Sieve analysis			
(> 45 µm)	[%]	3	0.1
Spezifische Oberfläche / Specific surface area			
(BET)	[m ² /g]	1.8	2.5
Schüttdichte / Bulk density			
	[kg/m ³]	750	650
Ölaufnahme / Oil absorption			
	[ml/100g]	17	19
Weißgrad / Whiteness			
(Elrepho 457 nm)	[%]	93	94
Spezifische Leitfähigkeit / Specific conductivity			
	[µS/cm]	50	60
Brechungsindex / Refractive index			
		1.58	1.58
Härteindex (Mohs) / Mohs hardness			
		2.5 - 3.5	2.5 - 3.5
Dichte / Density			
	[g/cm ³]	2.4	2.4

Produktvorteile / Product properties

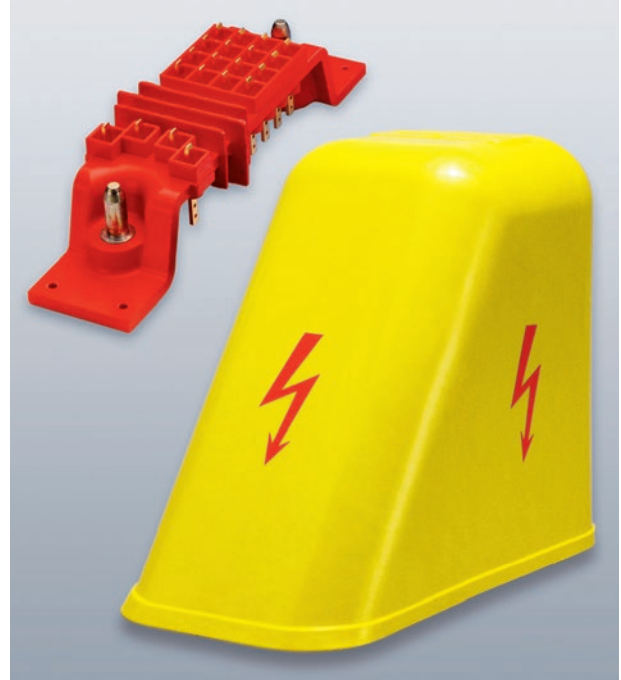
- **Breite Kornverteilung**
Broad grain size distribution
- **Niedrige Viskosität**
Low viscosity
- **Hohe Oberflächengüte**
High surface quality
- **Gute Packungsdichte**
Good packing density



Beispiele für den Einsatz von APYRAL 16, APYRAL 24 / Examples for the use of APYRAL 16, APYRAL 24



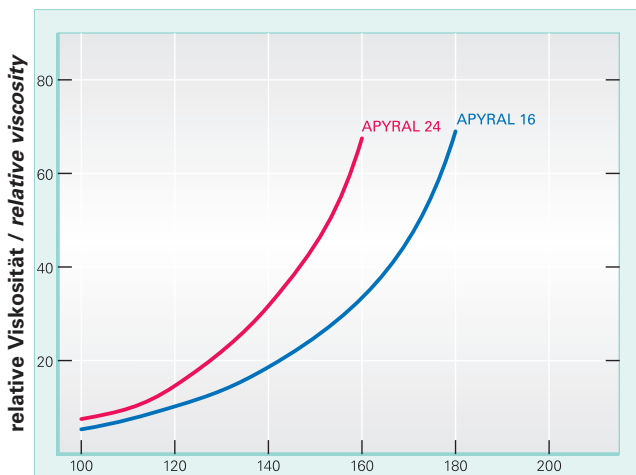
Kabelschacht / Cable conduit



Bauteile für den Elektrobereich
Components for electronic industry

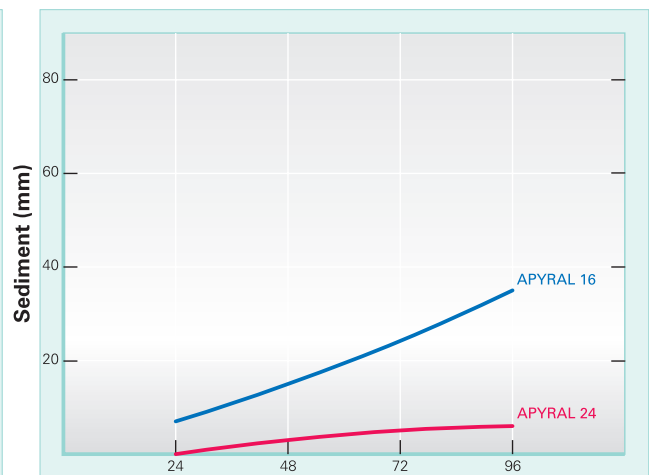
Produkt- / Product-Information

Viskositätsverhalten in UP-Harz Palapreg P17
Viscosity behaviour in UP-resin Palapreg P17



Teile ATH auf 100 Teile Harz / Parts of ATH in 100 parts of resin

Absetzverhalten in UP-Harz Palapreg P80 (Füllgrad 50%)
Settling behaviour in UP-resin Palapreg P80 (Filling level 50%)



Zeitdauer / Period of time (h)

For further information, please contact:

Nabaltec AG
P. O. Box 1860 · D-92409 Schwandorf
Phone +49(0) 9431 53 - 0
Fax +49(0) 9431 61557
www.nabaltec.de

Customer Service Division Functional Fillers

Phone +49(0)9431 53-462/458/467/446
fillers@nabaltec.de

Technical Service / Development

Phone +49(0)9431 53-526/433/293/521

All data listed in this brochure are reference values and subject to production tolerances. These values are exclusive to the product description and no guarantee is placed on the properties. It remains the responsibility of the users to test the suitability of the product for their application.