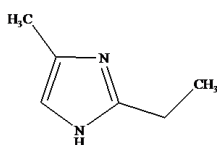


BCA EMI 24LV - 2-ethyl-4-methylimidazole

DESCRIPTION:

BCA EMI 24 LV (Low Viscosity) is commonly used as a sole curing agent or as a dicy and anhydride cure accelerator in epoxy resin based formulations. Typical loading level as a sole curing agent is about 1 - 5 phr and as a dicy and anhydride cure accelerator is about 0.5 - 3.0 phr.

CHEMICAL STRUCTURE:



AD- VANTAGES:

- Rapid Reactivity at < 100°C
- High Glass Transition Temp.
- High Chemical Resistance

APPLICATIONS:

- Composites such as Pre-Pegs and Filament Winding
- One-Component Adhesives for Electronics Applications
- Electrical Potting
- Encapsulation

STORAGE LIFE:

This product has a shelf life of two years from the date of manufacture when stored at ambient temperature in the original unopened container.

HANDLING PRECAUTIONS:

Please refer to the BCA EMI 24LV Safety Data Sheet.

TYPICAL PROPERTIES	
Appearance	Amber to Brownish Liquid
Viscosity (cPs @ 25°C)	1000
Assay (GC)	83% min.
Moisture Content (% max)	0.4
Gardner Color	15 max.
Mix Ratio with Std. Epoxy Resin	1 - 5 PHR
PERFORMANCE PROPERTIES	
Gel Time @ 150°C	1 Minute
Gel Time @ 100°C	7 Minutes
Latency @ 25°C	9 - 12 Hours
HDT	163°C