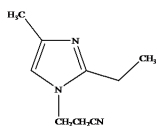


BCA EMI 24 CN - 1-(2-cyanoethyl)-2-ethyl-4-methylimidazole

DESCRIPTION:

BCA EMI 24 CN is commonly used as a sole curing agent or as a dicy and anhydride cure accelerator in epoxy resin based formulations. Typical loading level as a sole curing agent is about 4 - 6 phr and as a dicy and anhydride cure accelerator is about 0.5 - 1.5 phr. EMI 24 CN provides good compatibility with liquid epoxy resins and 2 - 3 days of formulation shelf stability at ambient temperature.

CHEMICAL STRUCTURE:



AD-

VANTAGES:

- Rapid Reactivity at < 120°C
- High Glass Transition Temp.
- High Chemical Resistance

APPLICATIONS:

- Composites such as Pre-Pegs and Filament Winding
- One-Component Impact Res. Adhesives for Auto, Aerospace and Electronics Applications
- Electrical Potting / Encapsulation
- Neutralizer or Acid Stabilizers

STORAGE LIFE:

This product has a shelf life of two years from the date of manufacture when stored at ambient temperature in the original unopened container.

HANDLING PRECAUTIONS:

Please refer to the BCA EMI 24 CN Safety Data Sheet.

TYPICAL PROPERTIES	
Appearance	Amber to Brownish Liquid
Viscosity (cps min.)	200
Assay (GC)	85% min.
Moisture Content	< 0.5%
Gardner Color	< 16
EMI-24 Content (% max.)	4.0
Free Acrylonitrile (GC/MS)	500 ppm max.
Methanol Content	2.0% max.
Free Acrylonitrile (GC/MS)	500 ppm max.
Mix Ratio with Std. Epoxy Resin	4 - 6 PHR
PERFORMANCE PROPERTIES	
Gel Time @ 150°C	90 Sec.
Gel Time @ 100°C	15 Min.
Latency @ 25°C	3 Days
HDT	161°C